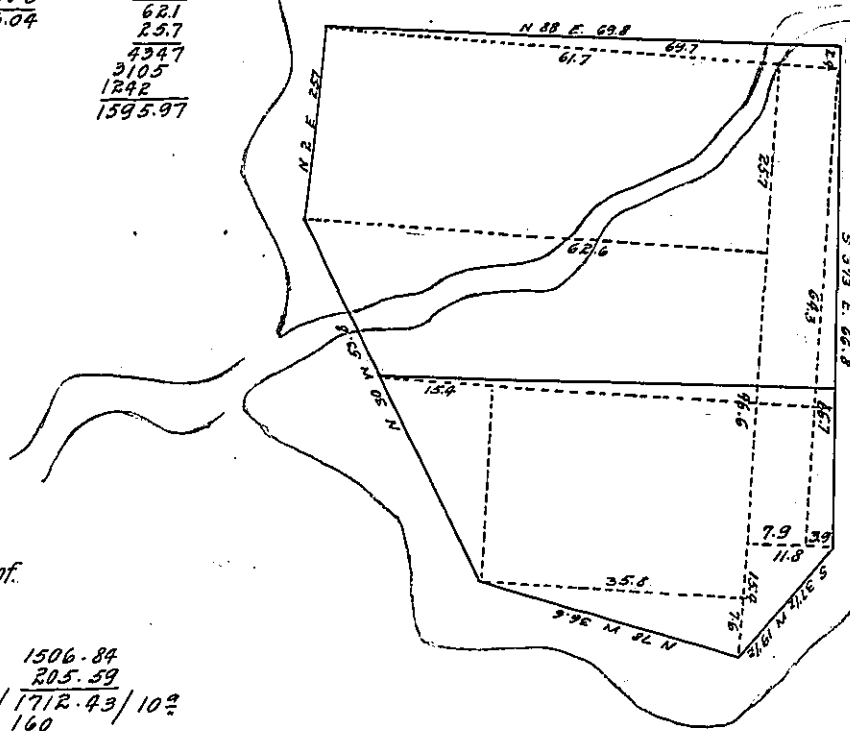


66.7
3.9
6003
2001
26013
130.06
507.97
638.03
90.86
728.89
136.04
269.98
1595.97
2460.90
2292.72
4753.62
83.64
4837.26 / 30 = 37.92
480
37

64.3
7.9
5787
4501
507.97
358
76
2148
2306
27208
736.04
15.4
11.8
1232
154
181.72
90.86
61.7
62.6
1243
621
25.7
4347
3105
1242
1595.97

69.6
35.8
98.4
49.2
46.6
2952
2952
1968
2292.72
69.7
1.2
1394
697
83.64

162M E LILION
MAY SOUTH BAY



	N.	S.	E.	W.
S 31 1/2 E 66.8	66.8	66.7	3.9	
S 31 1/2 W 19.5		15.4		11.8
N 78 W 366	7.6			35.8
N 30 W 53.8	46.6			26.8
N 2 E 25.7	25.7		0.9	
N 88 E 69.8	2.4		69.7	
	82.2	82.1	74.5	74.4

A draught of.

1506.84
205.59
/ 1712.43 / 102
160
112
10
122

90.86
136.04
226.90
14.62
998
225
4990
1996
1996
225550
13
675
225
2925
14.62

581
225
2905
1162
130725

26.7
15.4
1068
1335
267
105411.18
22.5
52.5 205
2.10
2.10
236.25

26.7
35.8
2136
1335
801
955.86

26.7
7.6
15.4
22.5
37.9
34.3
5.6

15.4
35.8
10.5
61.7
3.6
3702
1851
222.12
111.01

866
309
7794
25980
267594

500
309
4500
15000
5994
69.7202

999
698
7992
8081
5994

348
698
2784
3132
2088
242800 66,6664

352.53
198.45
955.81
/ 1506.84 /
411
18.17
160
2.17
160
57

581
667
4067
3486
3486
387527

608
195
3040
5472
608
11,8560

348
257
2436
1740
696
89436

500
309
4500
15000

866
309
7794
25980
267594

352.53
198.45
955.81
/ 1506.84 /
411
18.17
160
2.17
160
57

998
667
6986
5988
5988
665666

793
195
3965
7137
793
15,4635

999
257
6993
4995
1998
25,6743

999
698
7992
8081
5994

15.4
35.8
10.5
61.7
3.6
3702
1851
222.12
111.01

352.53
198.45
955.81
/ 1506.84 /
411
18.17
160
2.17
160
57

978
366
5868
5868
2934
357948

500
338
3000
1500
2500
268000

999
70
69,930
70
24360

999
698
7992
8081
5994

15.4
35.8
10.5
61.7
3.6
3702
1851
222.12
111.01

352.53
198.45
955.81
/ 1506.84 /
411
18.17
160
2.17
160
57

207
366
1242
1242
621
75762

866
538
6928
2598
4330
465908

998
698
8984
8984
5988
69,7504

999
698
7992
8081
5994

15.4
35.8
10.5
61.7
3.6
3702
1851
222.12
111.01

352.53
198.45
955.81
/ 1506.84 /
411
18.17
160
2.17
160
57

IN TESTIMONY that the above is a copy of the original remaining on file in the Department of Internal Affairs of Pennsylvania, made conformably to an Act of Assembly approved the 16th day of February, 1833, I have hereunto set my Hand and caused the Seal of said Department to be affixed at Harrisburg, this fourteenth day of March 1912.

Henry Horck
Secretary of Internal Affairs.